

# BYLAW NO. 24-32-497

## COUNTY OF NORTHERN LIGHTS PROVINCE OF ALBERTA

### BEING A BYLAW FOR THE PURPOSE OF ESTABLISHING MAXIMUM SPEED LIMITS FOR MUNICIPAL ROADS.

**WHEREAS** Section 14 of the Traffic Safety Act (Chap 6, RSA 2000 T-6) authorizes the Council of a Municipal District to establish maximum speed limits for roadways subject to its direction, control and management; **and**

**WHEREAS** the Council of the County of Northern Lights wishes to establish maximum speed limits for roadways subject to its direction, control and management.

**NOW THEREFORE** the Council of the County of Northern Lights in the Province of Alberta, duly assembled, hereby enacts the following:

1. That a maximum speed limit of eighty (80) kilometers per hour be established for all roadways subject to the direction, control and management of the COUNTY OF NORTHERN LIGHTS, in the Province of Alberta, except on roadways as established and described in Schedule "A" attached and forming a part of this Bylaw.
2. That the appropriate speed limit sign posting be established, therefore.
3. That this Bylaw shall have force and take effect at the final reading thereof.
4. That Bylaw 22-32-476 is hereby rescinded.

Read for a First time this 22<sup>nd</sup> day of September 2024.

  
\_\_\_\_\_  
Chief Elected Official

  
\_\_\_\_\_  
Chief Administration Officer

Read for a Second time this 12<sup>th</sup> day of November 2024.

  
\_\_\_\_\_  
Chief Elected Official

  
\_\_\_\_\_  
Chief Administration Officer

Read for a Third and Final time this 12<sup>th</sup> day of November 2024.

  
\_\_\_\_\_  
Chief Elected Official

  
\_\_\_\_\_  
Chief Administration Officer

**SCHEDULE "A"**  
**TO BYLAW NO. 24-32-497**

**Hamlets**

A - HAMLET OF DEADWOOD

All designated roads and streets within the boundaries of the Hamlet of Deadwood as declared by bylaw, as per attached Map No. 1,

MAXIMUM - 50 KILOMETERS/HOUR

B - HAMLET OF DIXONVILLE

All designated roads and streets within the boundaries of the Hamlet of Dixonville as declared by bylaw, as per attached Map No. 2,

MAXIMUM - 30 KILOMETERS/HOUR

C - HAMLET OF NORTH STAR

All designated roads and streets within the boundaries of the Hamlet of North Star as declared by bylaw, as per attached Map No. 3,

MAXIMUM - 30 KILOMETERS/HOUR

D - HAMLET OF NOTIKEWIN

All designated roads and streets within the boundaries of the Hamlet of Notikewin and the Highway 35 Service Road as declared by bylaw, as per attached Map No. 4,

MAXIMUM - 30 KILOMETERS/HOUR

**Subdivisions**

E - ASPEN GROVE ESTATES

All designated roads and streets within the boundaries of the Aspen Grove Estates Subdivision as shown on Registered Subdivision Plan No. 802-0265, as per attached Map No. 5,

MAXIMUM - 30 KILOMETERS/HOUR

F - PARADISE ACRES (BAMPING SUBDIVISION)

All designated roads and streets within the boundaries of the Paradise Acres (Bamping) Subdivision on Registered Subdivision Plan No. 822-2893, as per attached Map No. 6,

MAXIMUM - 30 KILOMETERS/HOUR

G - COUNTRY ROAD ESTATES (BEAR CREEK ESTATES)

All designated roads and streets within the boundaries of the Country Road Estates Subdivision as shown on Registered Subdivision Plan Nos. 822-2262 and 792-2417 as per attached Map No. 7,

MAXIMUM - 30 KILOMETERS/HOUR

H - SWEET WATER ESTATES

All designated roads and streets within the boundaries of the Sweet Water Estates Subdivision as shown on Registered Subdivision Plan No. 802-0936, as per attached Map No. 8,

MAXIMUM - 30 KILOMETERS/HOUR

I - WEBERVILLE RURAL INDUSTRIAL PARK

All designated roads and streets within the boundaries of the Weberville Rural Industrial Park Subdivision as shown on Registered Subdivision Plan No. 902-3616, as per attached Map No. 9,

MAXIMUM - 50 KILOMETERS/HOUR

J - KULYNAS FLAT

All designated roads and streets within the boundaries of the Kulynas Flat Subdivision as shown on Registered Subdivision Plan No. 0420620, 1623619, 1021714, 1622186, 0520038, 1522814, 0720395, 0829407 and road plan 902 3425 (Township Road 914) as per attached Map No. 10.

MAXIMUM – 30 KILOMETERS/ HOUR

K - NORTH RIDGE ESTATES

All designate roads and streets within the boundaries of the North Ridge Estates as shown on Registered Subdivision Plan No. 8722854 and 0623596 as per attached Map No. 11,

MAXIMUM- 30 KILOMETERS/ HOUR

L - WEBERVILLE COUNTRY ESTATES

All designate roads and streets within the boundaries of the Weberville Country Estates as shown on Registered Subdivision Plan No. 8021610, 9925686, 0423029, 9925414, 9721644 and 0723561 as per attached Map No. 12,

MAXIMUM- 30 KILOMETERS/ HOUR

M - WHITE TAIL RIDGE ESTATES

All designate roads and streets within the boundaries of the White Tail Ridge Estates as shown on Registered Subdivision Plan No. 1323093 as per attached Map No. 11,

MAXIMUM- 30 KILOMETERS/ HOUR

**Miscellaneous Roads**

N - TOWNSHIP ROAD 1014

Designated road Township Road 1014, 1.6 km west of Highway 695, as per attached Map No. 14,

MAXIMUM – 50 KILOMETERS / HOUR

O - HWY 35 SERVICE ROAD (AIRPORT)

Designated road Hwy 35 Service Road (Manning Airport) west of Hwy 35 as per attached Map No. 15,

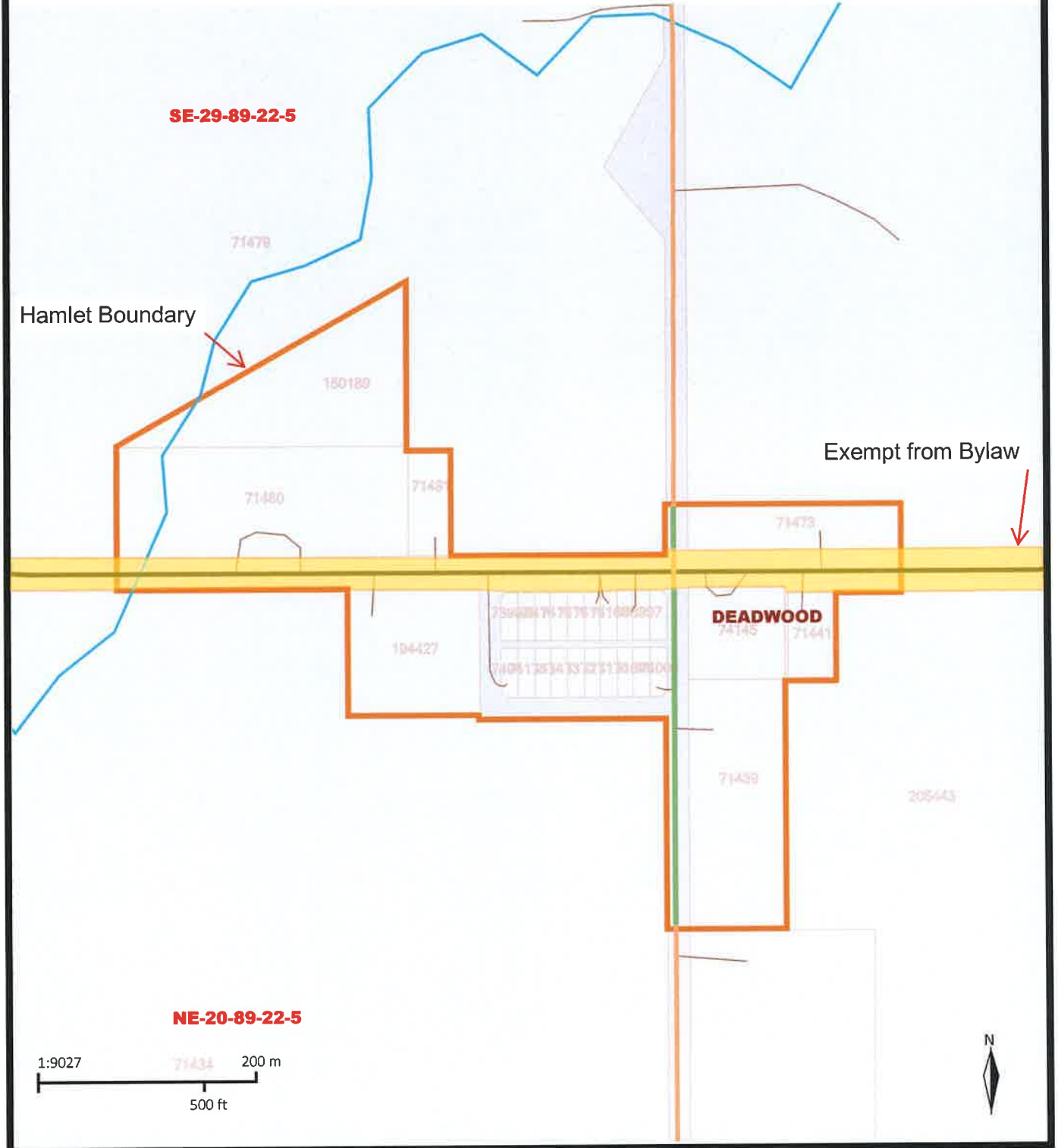
MAXIMUM – 50 KILOMETERS / HOUR

P - TOWNSHIP ROAD 920

Designated road Township Road 920, ½ mile east of Provincial Highway 35, as per attached Map No. 16,

MAXIMUM - 50 KILOMETERS/ HOUR

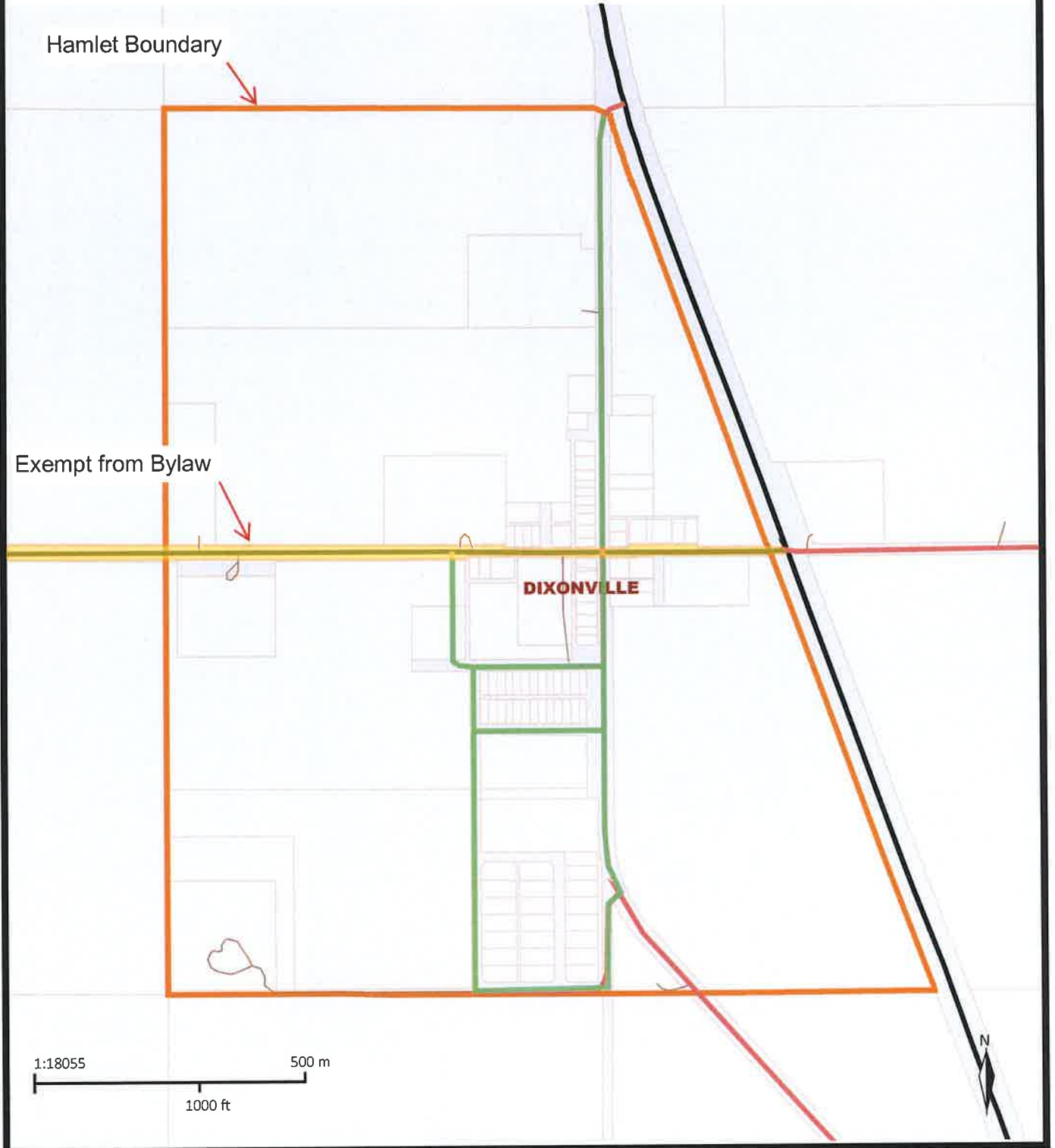
Map 1 - Hamlet of Deadwood - Bylaw 24-32-497



The makes no representation as to the completeness, timeliness and accuracy of the information contained on this website. The expressly disclaims liability for any and all damages and losses arising from or in any way related to the use of this website.



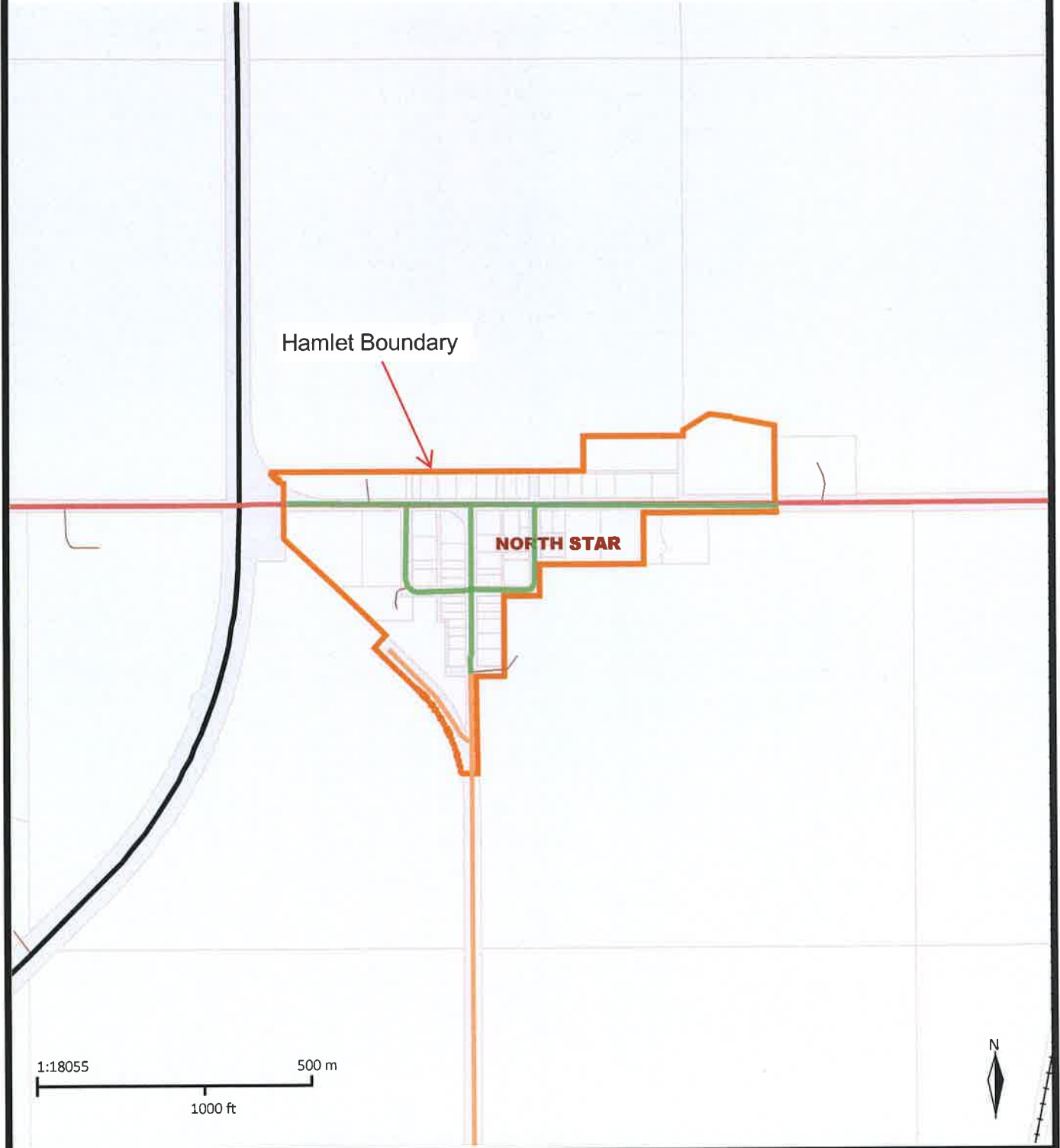
Map 2 - Hamlet of Dixonville - Bylaw 24-32-497



The makes no representation as to the completeness, timeliness and accuracy of the information contained on this website. The expressly disclaims liability for any and all damages and losses arising from or in any way related to the use of this website.



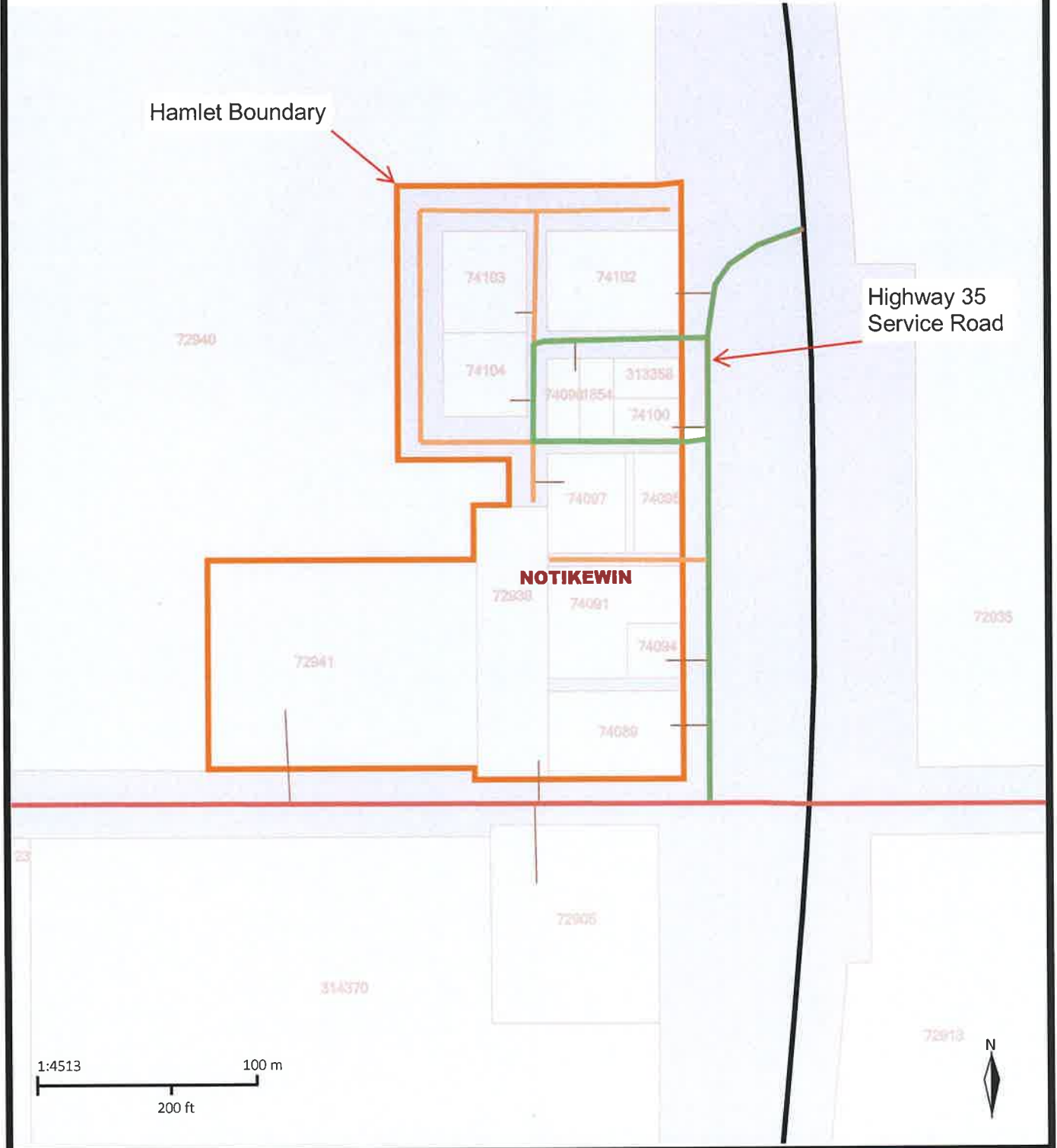
Map 3 - Hamlet of North Star - Bylaw 24-32-497



The makes no representation as to the completeness, timeliness and accuracy of the information contained on this website. The expressly disclaims liability for any and all damages and losses arising from or in any way related to the use of this website.



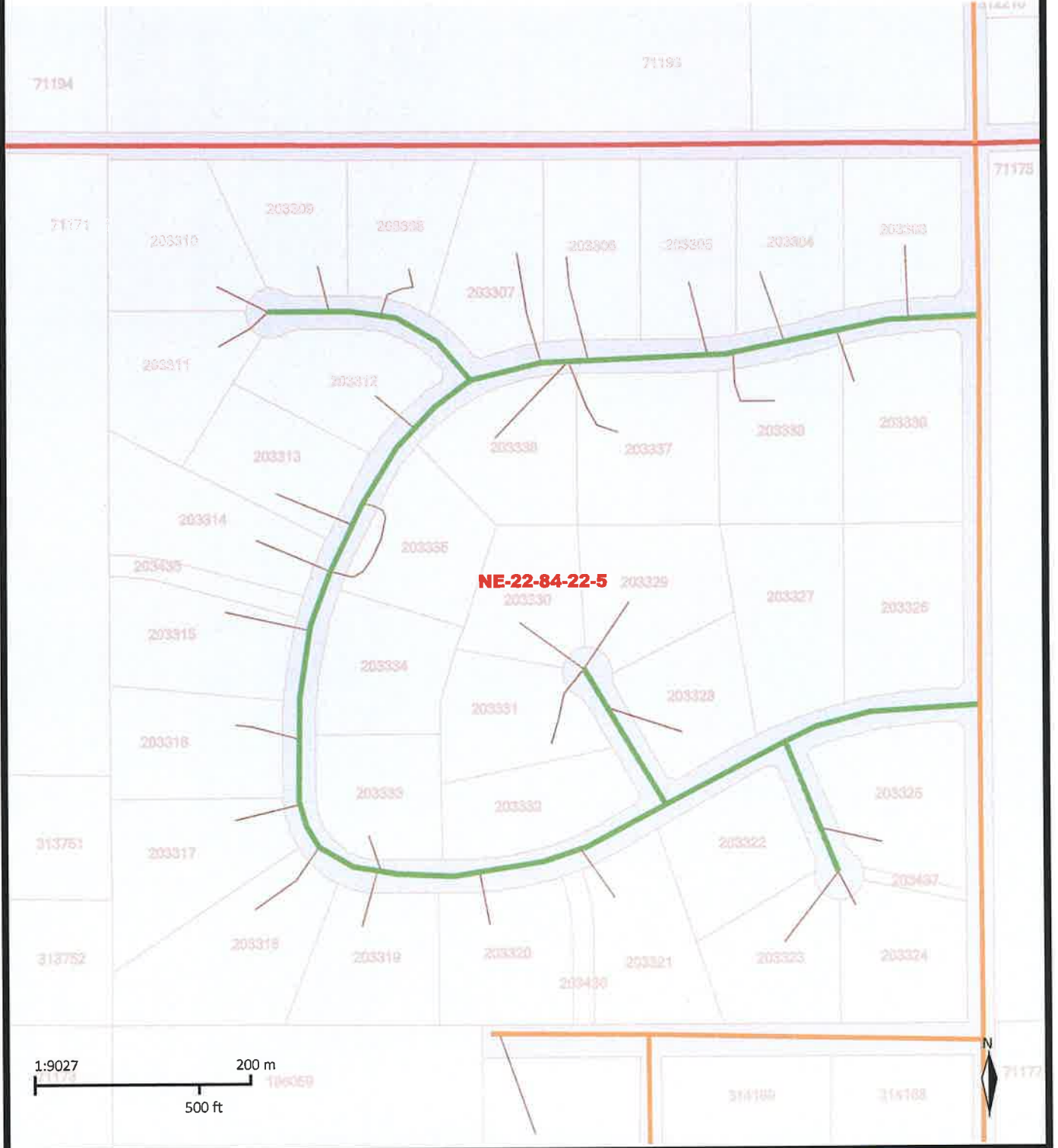
Map 4 - Hamlet of Notikewin - Bylaw 24-32-497



The makes no representation as to the completeness, timeliness and accuracy of the information contained on this website. The expressly disclaims liability for any and all damages and losses arising from or in any way related to the use of this website.



Map 5 - Aspen Grove - Bylaw 24-32-497

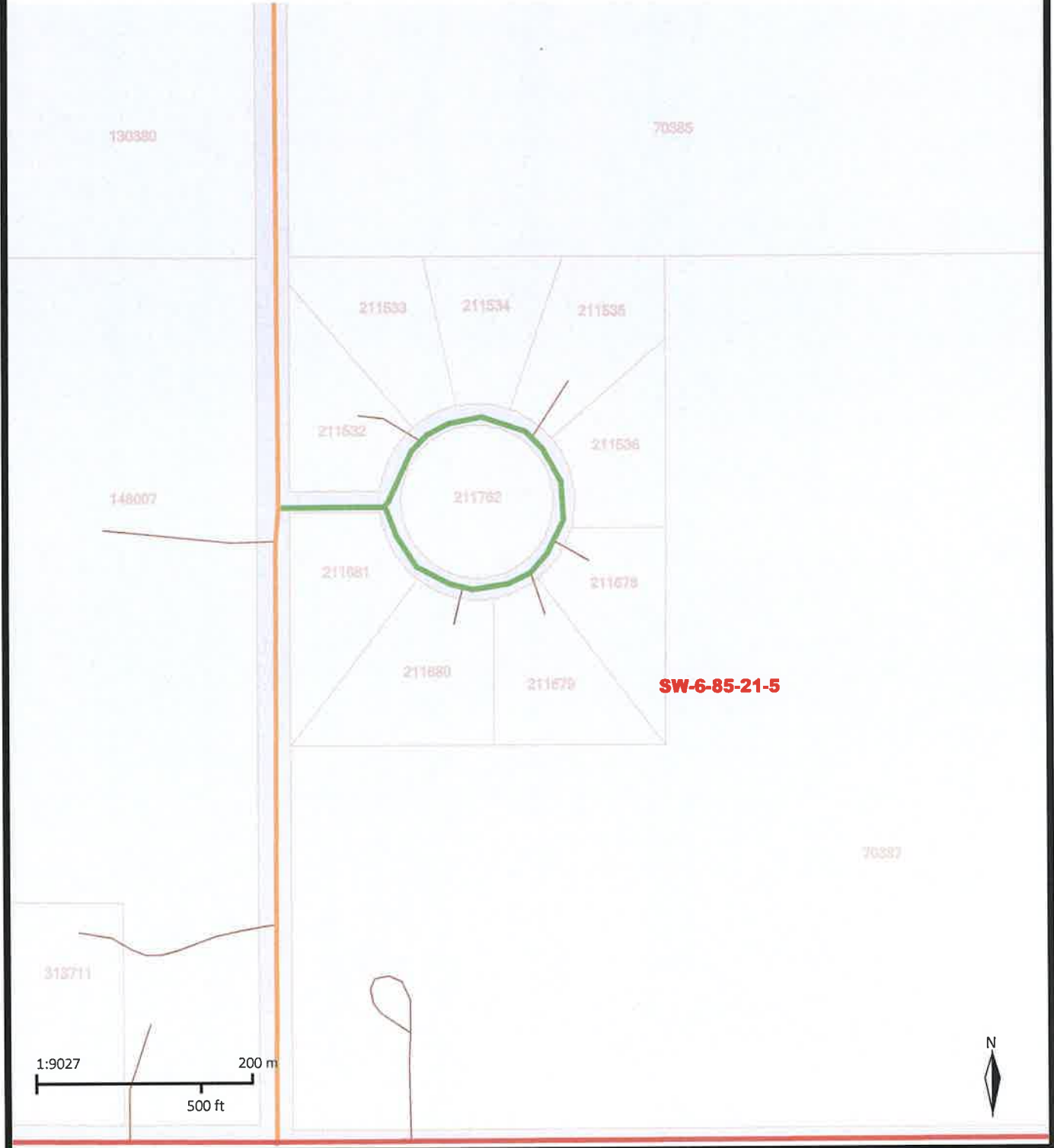


The makes no representation as to the completeness, timeliness and accuracy of the information contained on this website. The expressly disclaims liability for any and all damages and losses arising from or in any way related to the use of this website.





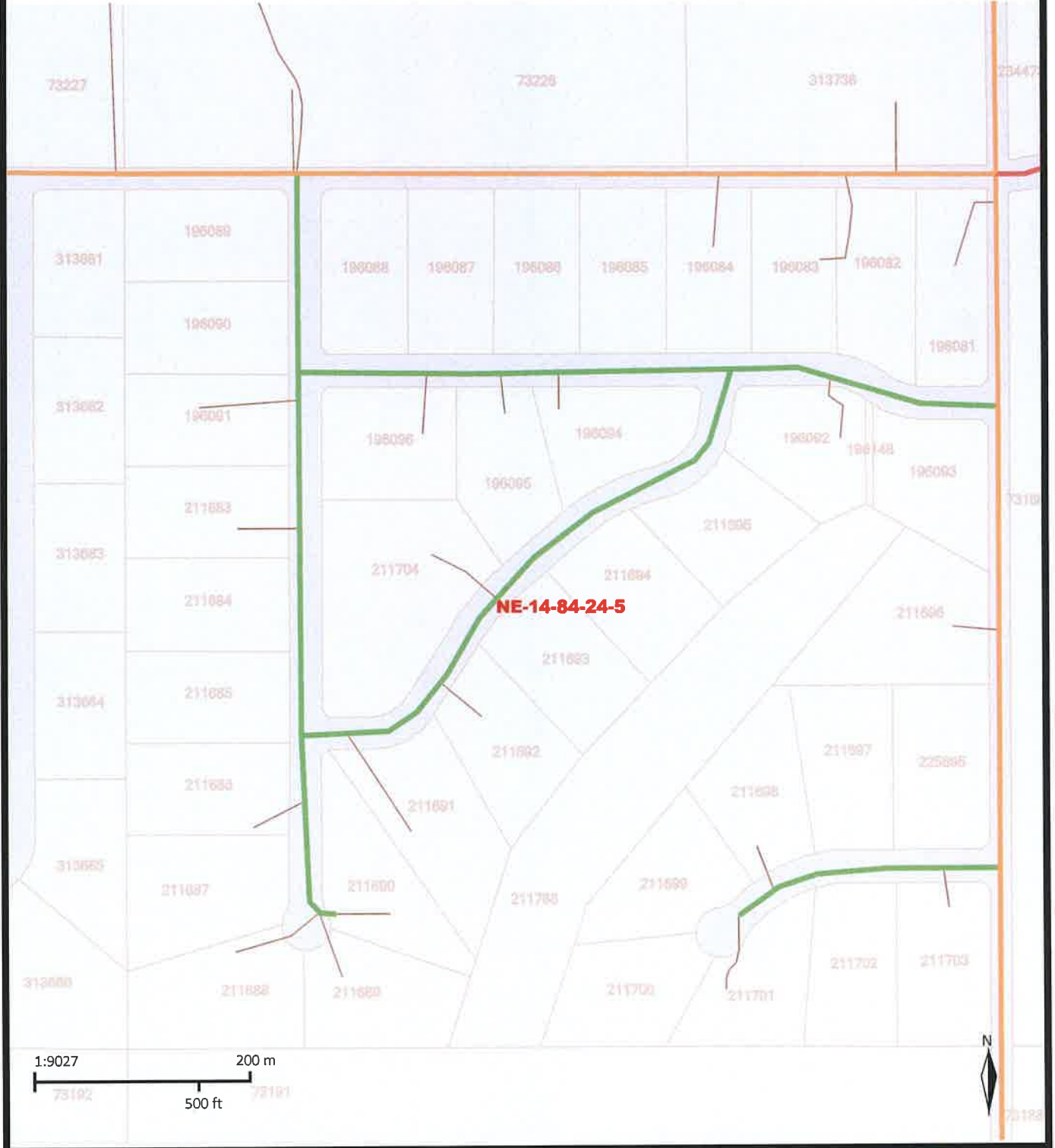
Map 6 - Paradise Acres (Bamping) - Bylaw 24-32-497



The makes no representation as to the completeness, timeliness and accuracy of the information contained on this website. The expressly disclaims liability for any and all damages and losses arising from or in any way related to the use of this website.



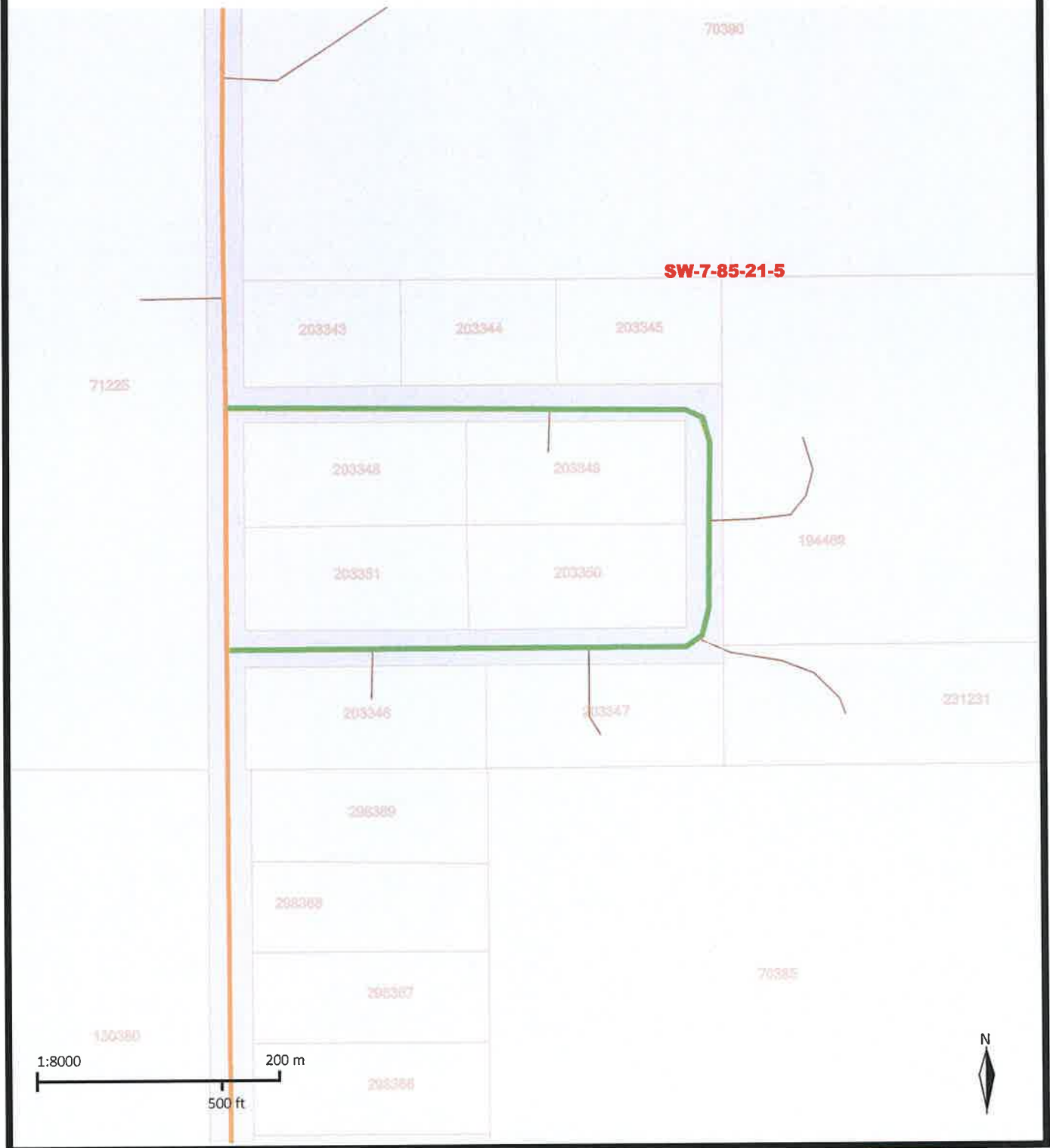
Map 7 - Country Road Estates (Bear Creek) - Bylaw 24-32-497



The makes no representation as to the completeness, timeliness and accuracy of the information contained on this website. The expressly disclaims liability for any and all damages and losses arising from or in any way related to the use of this website.



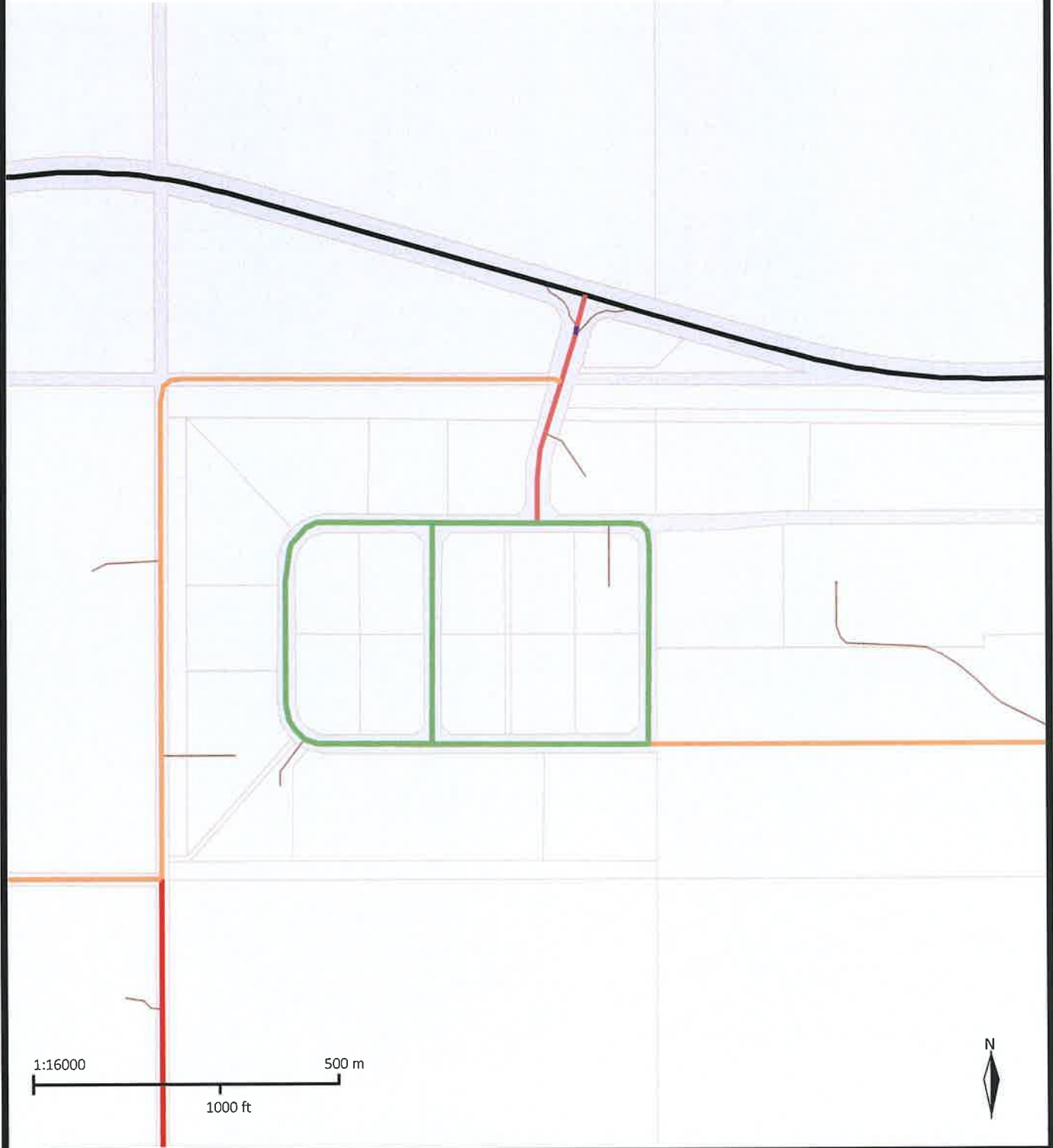
Map 8 - Sweet Water Estates - Bylaw 24-32-497



The makes no representation as to the completeness, timeliness and accuracy of the information contained on this website. The expressly disclaims liability for any and all damages and losses arising from or in any way related to the use of this website.



Map 9 - Weberville Rural Industrial Park - Bylaw 24-32-497



The makes no representation as to the completeness, timeliness and accuracy of the information contained on this website. The expressly disclaims liability for any and all damages and losses arising from or in any way related to the use of this website.



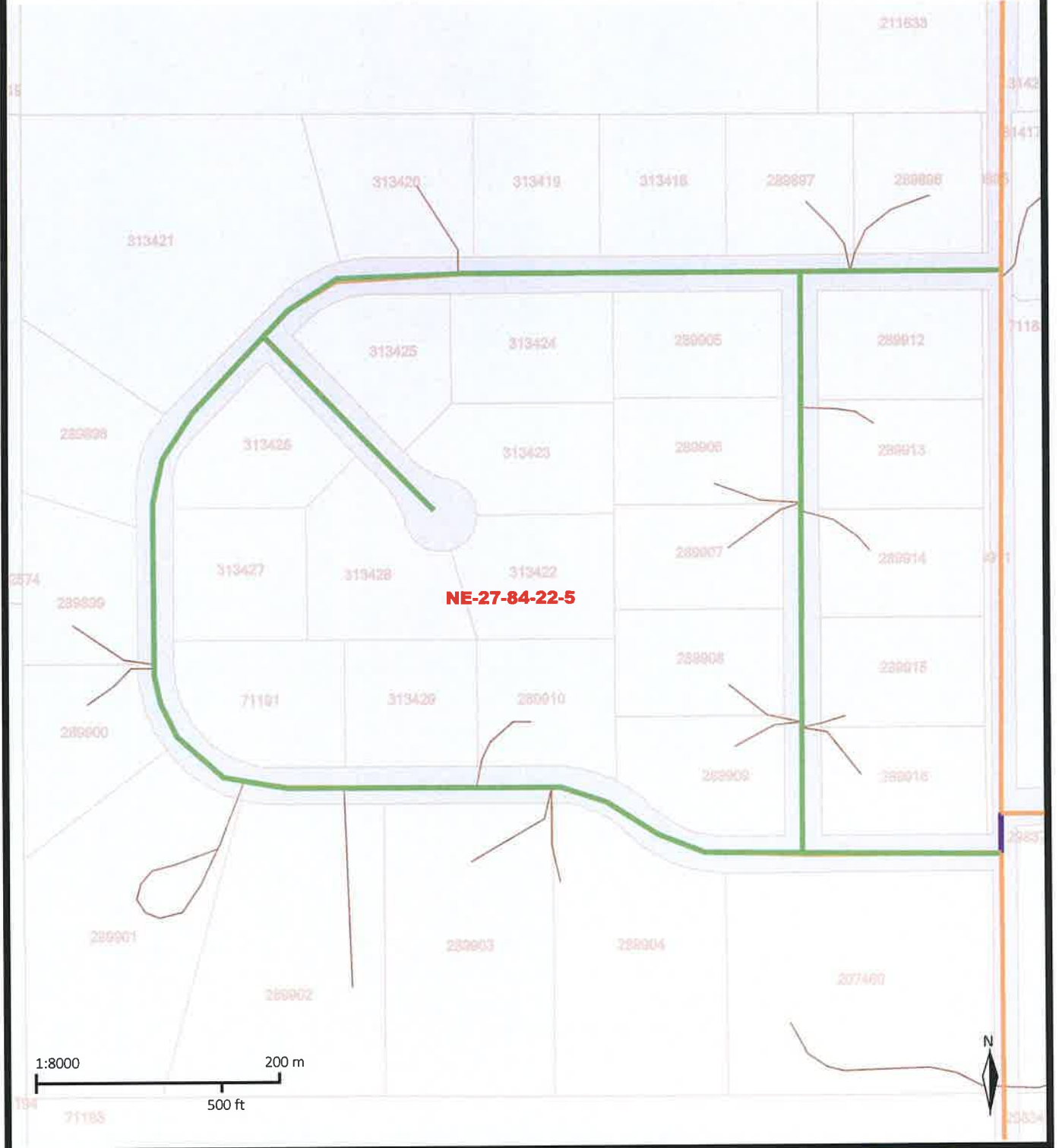
Map 10 - Kulyna's Flat - Bylaw 24-32-497



The makes no representation as to the completeness, timeliness and accuracy of the information contained on this website. The expressly disclaims liability for any and all damages and losses arising from or in any way related to the use of this website.



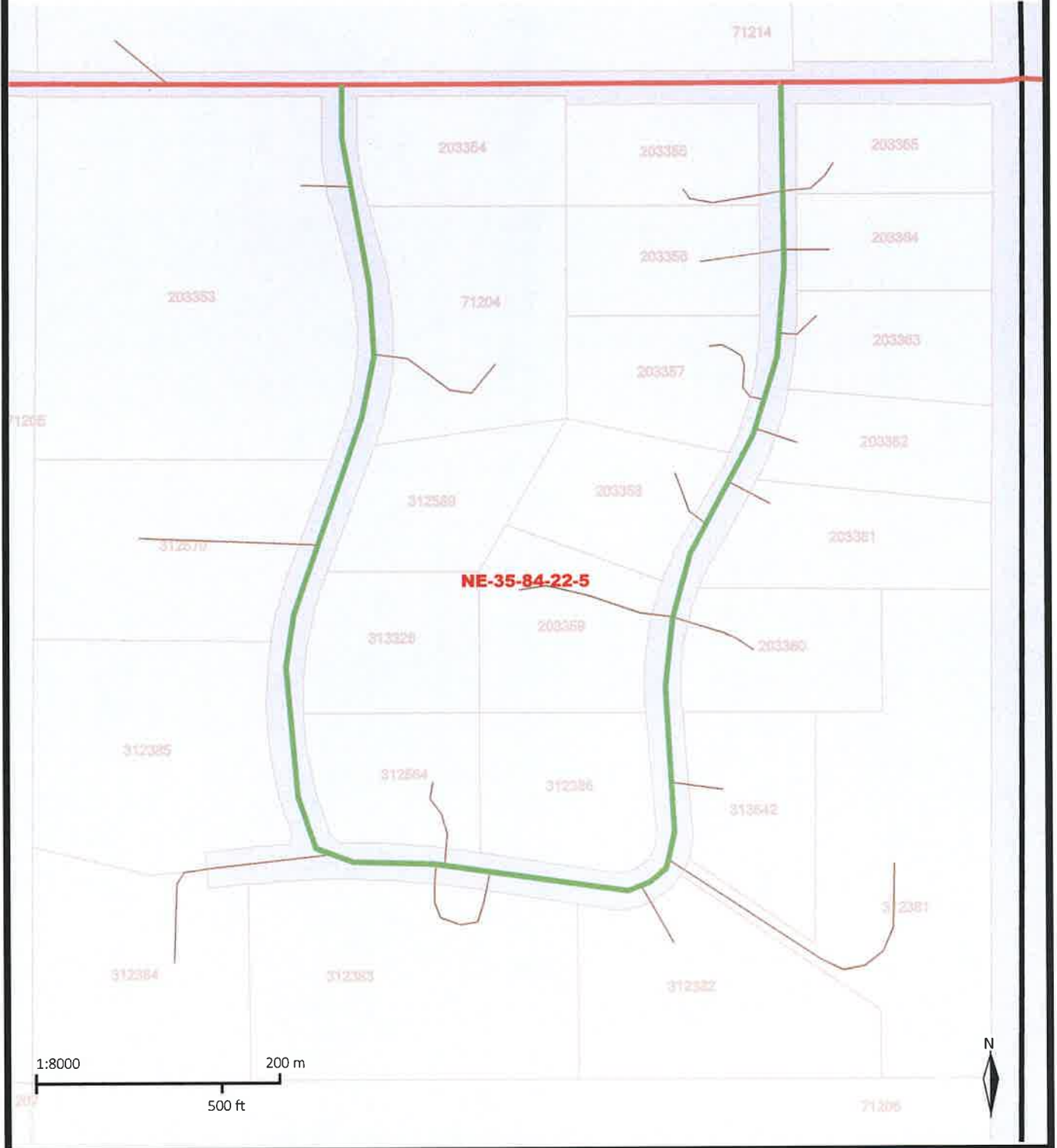
Map 11 - North Ridge Estates - Bylaw 24-32-497



The makes no representation as to the completeness, timeliness and accuracy of the information contained on this website. The expressly disclaims liability for any and all damages and losses arising from or in any way related to the use of this website.



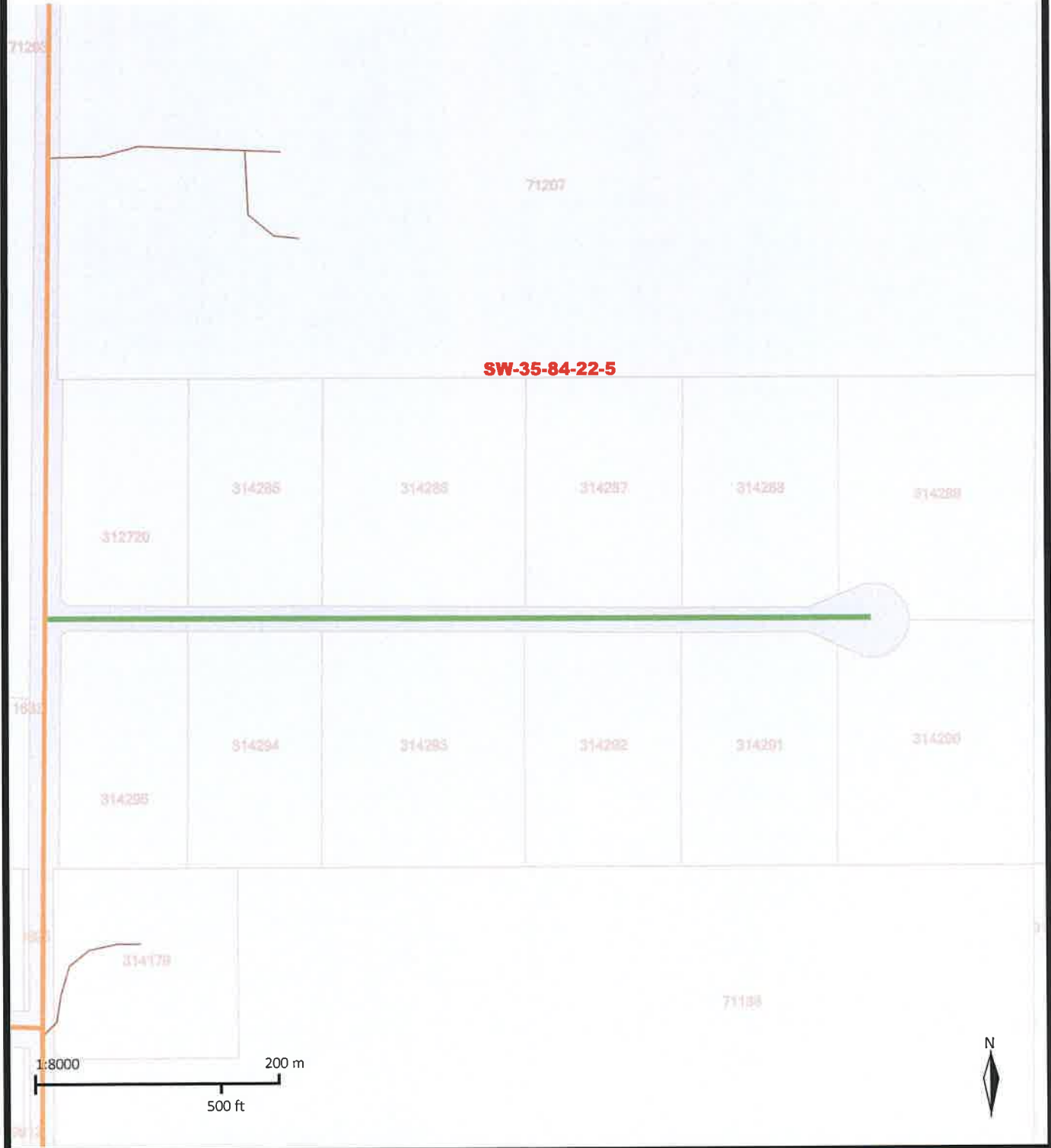
Map 12 - Weberville Country Estates - Bylaw 24-32-497



The makes no representation as to the completeness, timeliness and accuracy of the information contained on this website. The expressly disclaims liability for any and all damages and losses arising from or in any way related to the use of this website.



Map 13 - White Tail Ridge Estates - Bylaw 24-32-497

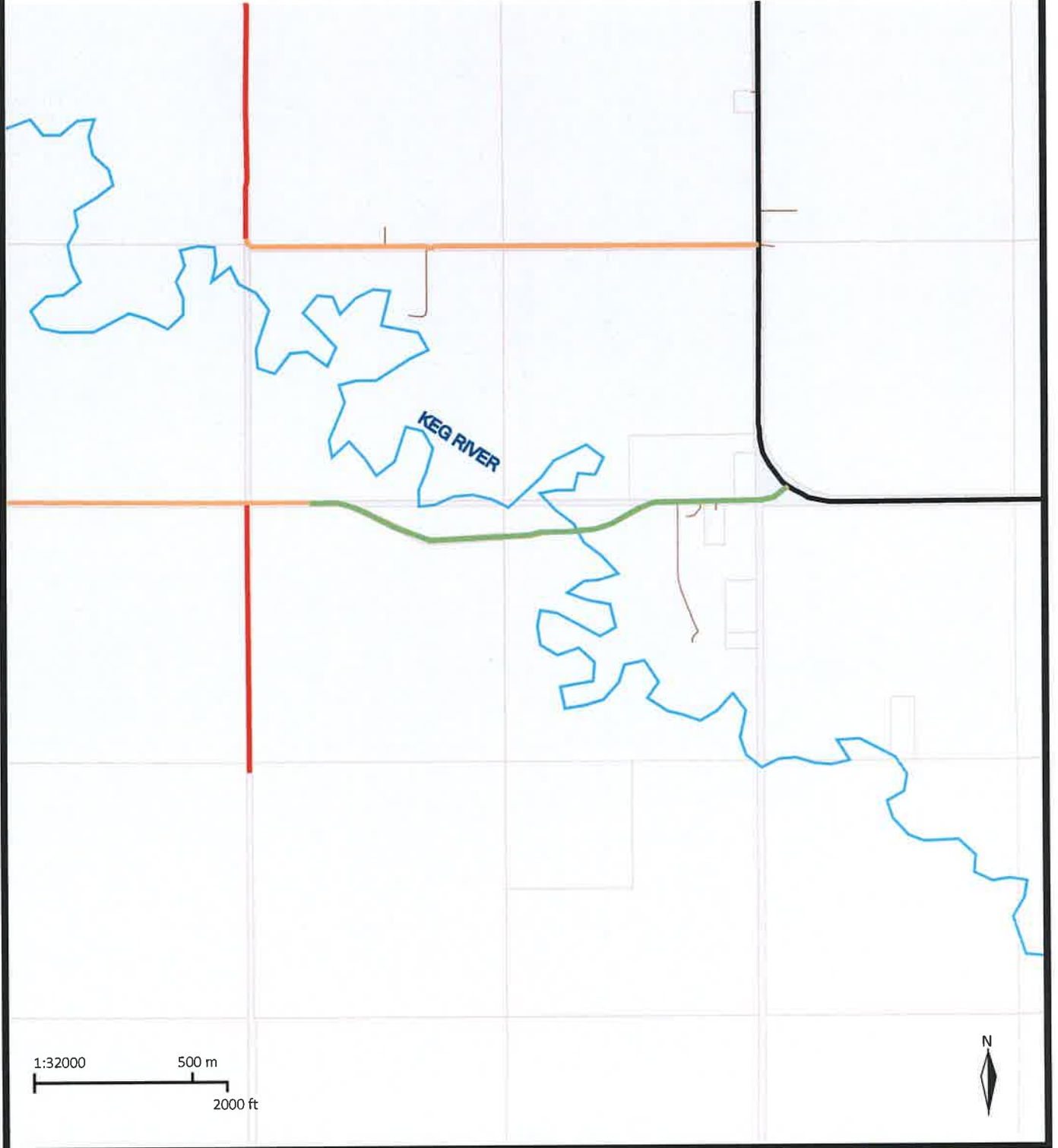


The makes no representation as to the completeness, timeliness and accuracy of the information contained on this website. The expressly disclaims liability for any and all damages and losses arising from or in any way related to the use of this website.





Map 14 - Township Road 1014 - Bylaw 24-32-497



The makes no representation as to the completeness, timeliness and accuracy of the information contained on this website. The expressly disclaims liability for any and all damages and losses arising from or in any way related to the use of this website.



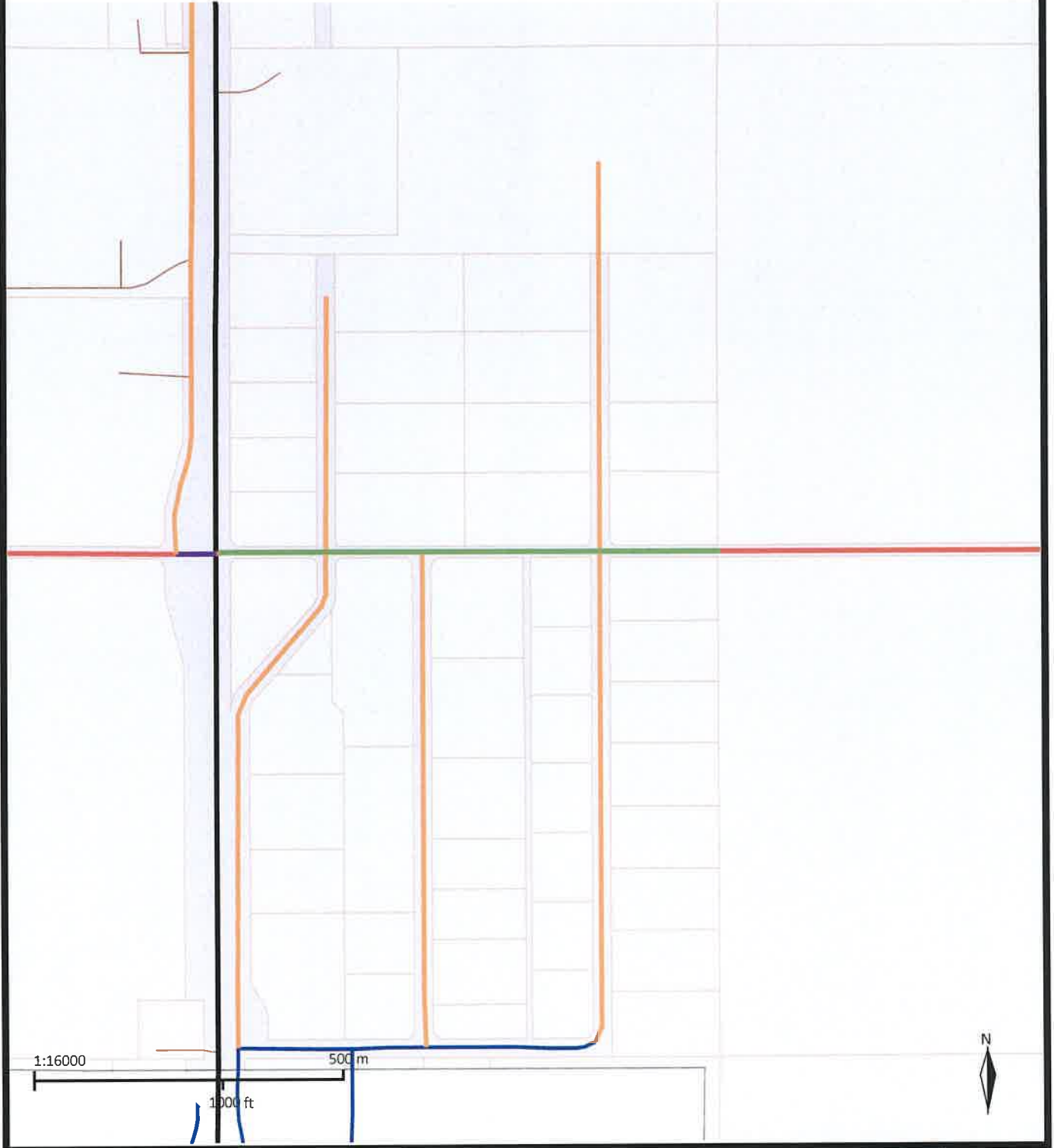
Map 15 - Airport Service Road - Bylaw 24-32-497



The makes no representation as to the completeness, timeliness and accuracy of the information contained on this website. The expressly disclaims liability for any and all damages and losses arising from or in any way related to the use of this website.



Map 16 - Township Road 920 - Bylaw 24-32-497



The makes no representation as to the completeness, timeliness and accuracy of the information contained on this website. The expressly disclaims liability for any and all damages and losses arising from or in any way related to the use of this website.

